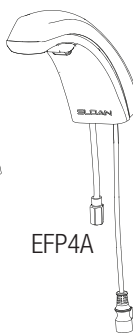
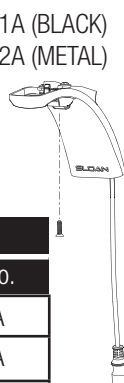


Optima® EBF-85/EBF-187/ETF-80/ETF-880 Parts & Accessories



EBF-85 Deck Mount, battery **EBF-187** Deck Mount, battery
ETF-80 Deck Mount, hardwired **ETF-880** Deck Mount, hardwired

EFP61A (BLACK)
EFP62A (METAL)



ETF1038A
ETF1021A
ETF1041A
ETF1028A
ETF1022A



EFP37A

SPOUT ASSEMBLY

Description	Code No.	Part No.
Spout Assembly EBF-85/ETF-80	0367001	EFP1A
Spout Assembly EBF187/ETF-880	0367004	EFP4A
Sensor & Cable Assembly-EBF-85/ETF-80	0367061	EFP61A
Sensor & Cable Assembly-EBF-187/ETF-880	0367062	EFP62A
Spout Mounting Kit	0367037	EFP37A

SPRAYHEAD OPTIONS

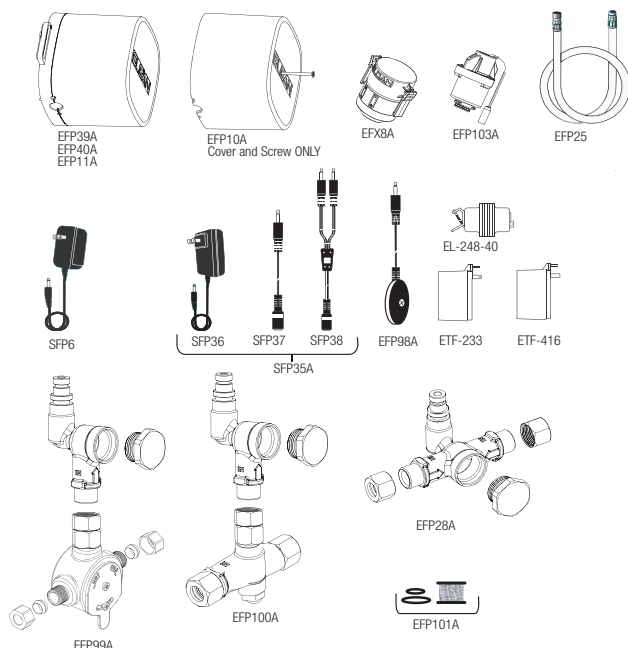
Description	Type	Code No.	Part No.
0.35 GPM/1.3 Lpm	MLM	3365755	ETF1038A
0.5 GPM/1.9 Lpm	MLM	3365091	ETF1021A
1.0 GPM/3.8 Lpm	MLM	3365557	ETF1041
1.5 GPM/5.7 Lpm	LAM	3365161	ETF1028A
2.2 GPM/8.3 Lpm	LAM	3365160	ETF1027A
2.2 GPM/8.3 Lpm	AER	3365090	ETF1022A

TRIMPLATE OPTIONS

Description	Code No.	Part No.
4"	3365468	ETF312A
8"	3365024	ETF510A
4" Centerset (ETF-80/EBF-85)	3365466	ETF295A
4" Centerset (EBF-187/ETF-880)	3365473	ETF662A

BELOW DECK ASSEMBLIES

Description	Code No.	Part No.
Control Box No Turbine	0367039	EFP39A
Control Box Turbine 0.5 gpm	0367040	EFP40A
Control Box Turbine 1.5 gpm	0367011	EFP11A
Quick Connect Spout Hose 24"	0367025	EFP25
Control Box Cover w/Screw	0367010	EFP10A
Solenoid Assembly	0367103	EFP103A
Battery Pack	3324113	EFX8A
Double Inlet Tee Filter Assembly	0367028	EFP28A
BDM & Single Inlet Tee Filter Assembly Kit	0367099	EFP99A
BDT & Single Inlet Tee Filter Assembly Kit	0367100	EFP100A
Replacement Filter Pack-(5) Filter (5) Large O-rings (5) Small O-rings	0367101	EFP101A
24 VAC Power Harness Assembly	0367098	EFP98A
110V/6 VDC Power Supply	0362006	SFP6
100-240 VAC/6 VDC Power Supply	0362016	SFP36
120/24 VAC Power Supply	0365534PK	ETF-233
120/24 VAC Power Supply (Canada) Plug-in	0365879	ETF-416
120/24 VAC Power Supply (Box Mount)	0345370PK	EL-248-40
Extension Cable	0362017	SFP37
Splitter Cable	0362018	SFP38
Gang Adapter Kit	0362035	SFP35A



NOTE: Some parts and accessories must be ordered separately

The information contained in this document is subject to change without notice.